

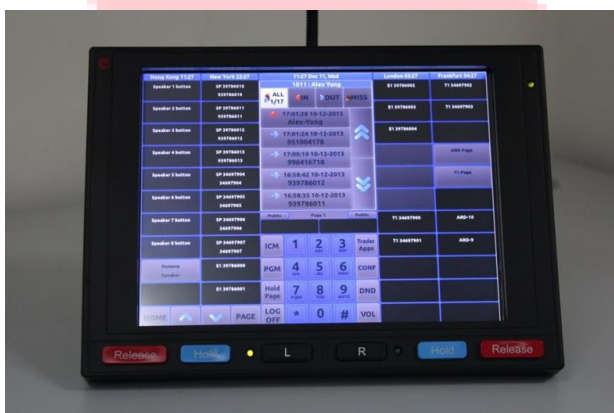


Infinet flex Turrets Series

The Adaptive Trading Platform (ATP) supports **flexTouch** and **flexFuse** turrets.

The **flex** turret is the most powerful and feature rich turret in the market today, which maximizes reliability, flexibility and capability all delivered with minimum Trader effort. The infrastructure cost is minimal and the small footprint of the turret is ideal for an active trading desk.

Each **flex** turret model supports the same common features and functionalities. Each Turret package includes Base Unit with High resolution LCD display, 2 x left/right Heavy Duty Handsets with instant “Mute” switch, high quality Microphone, and power supply. Additionally customers can choose optional 8 Channel speaker modules and have the ability to change the handset to a headset (including wireless)



flexTouch Turret

flex Turret Base Unit

The **flex** turret is the smallest turret in the market. The dimensions are 270mm (w) by 195mm (H) with a 10.4” high Resolution Screen Display.

The **flex** turret has an intuitive user interface with clear color-coded line status to enable easier access and control. Traders can select left or right handset to answer, dial out, hold, mute or release calls.

The **flex** turret has a Linux based operating system ensuring maximum security.

The **flex** turret has full IP connectivity ensuring maximum connectivity and reliability.

The specifications of the **flex** Turret Base Unit

- Power: Voltage 100 – 240 VAC nominal 80 Watts, frequency 50-60 Hz AC
- 6x Ports, 2 for H/S 1 & 2, 4 for Speaker Modules
- 2x Ethernet Ports:
 - Network Redundancy, or
 - One for Voice and One for TV Streaming (Available in Q4, 2012)
- Storage: 32GB SSD Hard Drive
- VGA Port (Maintenance Purpose)
- 3.5mm Microphone and Speaker Connection
- Brightness +/- Button



flexTouch Turret Model

- ☑ Fully touch in operation
- ☑ 6x User Preset Layouts
- ☑ Hard Key buttons for Left/Right, Hold and Release Buttons



flexFuse Turret Model

- ☑ Hybrid operation
- ☑ Hard Keys for Dial Pad
- ☑ Touch for Buttons
- ☑ 2 x Dial Keypad layouts (Left/Right)



flexKey Turret with Speaker Control Panel and External Speaker



The Speaker control unit is available for both **flexTouch** and **flexFuse** Turret Model. The speaker control unit provides:

- ☑ 8x Push to Talk Buttons
- ☑ 8x Push to Latch Buttons
- ☑ 8x Rotary Volume Controls
- ☑ 2 Group Buttons
- ☑ Visual Audio Detection on speaker button GUI to easily identify the remote trader.

Speaker Control Units can be combined to provide control for 16 channels

The External Speaker Device has additional controls for

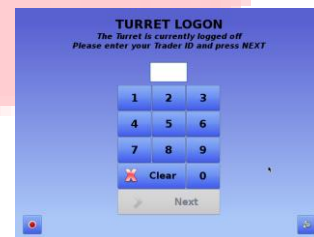
- ☑ Volume +/-
- ☑ Mic Activation
- ☑ Mic Mute (with Muted indication displaying on GUI speaker button)



Common features on flex Turret

- 5x preset time zones displayed on each turret
- Largest number of programmable buttons per turret, with 36 pages of 36 universal buttons per page – total of 1,296 lines/Speed Dials
- Purposeful Use of Colors
 - Using standard pre-defined colours to indicate different line status
 - Provides an instant visual overview to the trader of all his communication activities.
- Intercom between traders (with presence)
- Privacy on/off function for Barge-in Function,
- SIP, Digital (E1/T1/QSIG), analog lines and Private Wire (ringdown and open voice)
- Call “bubble” allows single key access to see, manage and access call history.
- Free Seating Logon to the turret with 4-Digit trader ID and Password

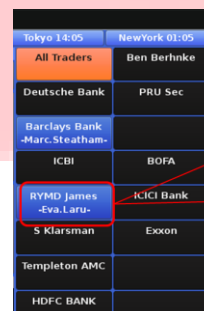
Colours	Line Activity Status
Flashing red	for incoming line
Blue	for line in use by other user
Green	for line in use by local user
Flashing blue	for line on hold by others
Flashing green	For line on hold by user



- All common communication functions – barge in, broadcast, conferencing, transfer, redial, privacy, mute, hands free, volume control
- Programmable transmit and receive Volumes for each individual line
- Programmable page shortcut provides the capability to categories pages into different sub-sections (e.g. trading desk, customers, banks, brokers, personal etc.)
- Hold calls management – hold page displaying list of all lines held within the system.

Barge in capability

Traders in the same group can have the same line programmed on their turrets. When one trader is on a line, other traders can jump in on that same line simply by hitting the appropriate line button on their turret creating an instant conference call.



Trader A – Eva Laru talking to James

Trader B – Keith barge in and conference with Eva and James

Keith's Turret



Call Bubble

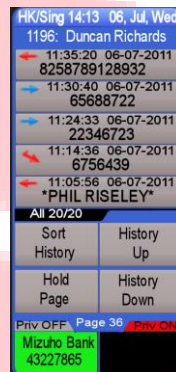
- Call bubble appears over the call history panel when a line is selected
- Provides functions and information related only to the call



- Information displayed includes:
 - dialed number
 - duration of a call
 - Left or Right handset indicator
 - UIN number (Unique Identification Number)

Each recording is tagged with a unique identification ID that allows the trader to instantly identify any specific recording that accompanies a transaction that they have executed.
- Call Functions available are:
 - XFER** – transfer a line to another trader or extension
 - HF** – moving a call from the handset to hands-free
 - PRIV** – Making the call either **Open** or **Private**
 - MUTE** – Mutes the handset
 - Back Space** – to delete incorrect digits during dialing
 - Clear** – Clears all the dialed digits
 - Redial** – Redials the number shown

When turret is in an inactive state the Call Bubble reverts to Call History Panel.



The Call History Panel displays:

- Last 5 call records
- Choice of either displaying All , Incoming, Outgoing or Missed calls types by selecting the button
- Scrollable up and down for maximum of the last 200 records
- Handset Status Indicator
- Privacy Indicator
- Mute Indicator

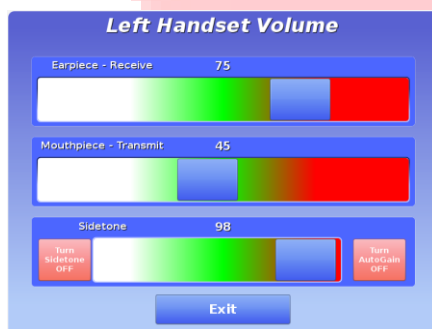


Control Module – Function Buttons

- **CONF** – Conferencing multiple external lines
- **Hold Page** – Display and provide access to all the lines on hold in the system quickly. Access to any of these lines by a single press (unless private hold is invoked by the party holding the call)



- **DND** – Instant mute to all incoming calls. Provides privacy when required. Button **RED** when chosen
- **VOL** – Controls and set the volume of the Active Line. Volume setting per line is saved until next change. (Different line has different tx/rx line settings!)



Control Module – Programming

- **PGM** – User programming button. Unlike typical turrets, it is extremely intuitive to use.
 - Speed dials: add, edit, swap or delete. (System prompts for action in each steps)
 - Set line ringing properties
 - Page labels: add, edit or delete titles
 - Home page: set home page, define timer to revert back to home page or disable timer
 - Page shortcuts: create, modify, delete page shortcut buttons
 - Font size: change font size for button label and CLI
 - Button click volume
 - Layout: Select from 6 different layouts of the turret, the Turret will be reloaded to reflect the layout change. (Only available for *flexTouch*)



Built it Intercom ICM

- ICM – Built-in intercom (with presence) to communicate with other traders within the system using internal voice paths without using line resources

Alex Kinmont 4444 Do not Disturb	Marcus Abbido 3453 ?	
Phil Risley 3333 Available	Bryan Petil 1214 Busy	
Steve Philips 2222 ?	Claire Tanique 1211 Busy	Eli Ortoguo 9876 Busy
Mickey Roque 3211 Available	Cielo Sky 1111 Busy	Danny Choo 5657 Available

Trader Apps –

Currently access to 2 software applications

- Force Drop** – enables the user to forcibly release a line in the event of issue
- Voice Recording Playback** – enables local playback on the turret of voice recordings (can be allowed/ restricted/ disallowed based on compliance regulations) Playback via internal speaker of left/right handset

Voice Recording & Storage

- Recording at each position
- Storage options chosen by customer
 - At the position
 - Upload to IFS Recording Server
 - Upload to NAS or file server
 - Advantages for BCP & DR Site

Recording Playback

- Web Playback
- Playback Via Turret

Voice recordings are made available for playback at the Turret. Built into the Turret (with customizable restriction on the number of allowable playback conversations) This completely negates the need to implement Third-Party, often complex and costly playback solutions

